

VERTICAL CRYOGENIC STORAGE TANK - CO₂

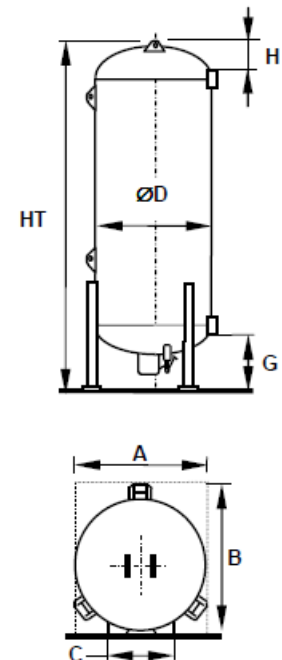
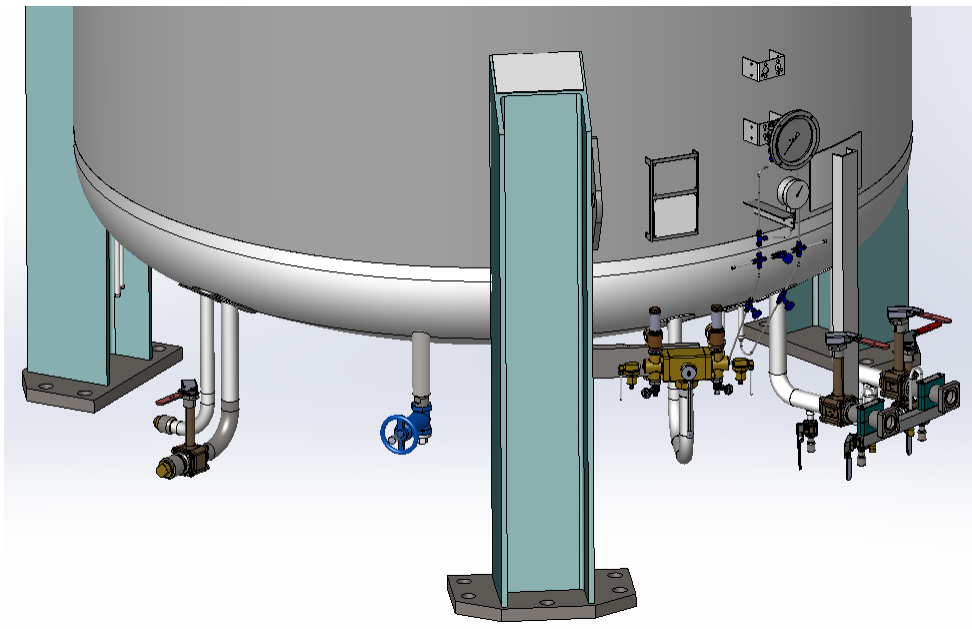
USA STOCK



CRYOLOR ASIA PACIFIC introduces the latest generation vacuum insulated cryogenic tank, the **RCIA Céline 3**, for Liquid Carbon dioxide service with **Stainless steel** inner vessel. Available in a range of sizes with a Maximum Allowable Working Pressure of **350 psig** (≈ 24 bar), **RCIA Céline 3** is designed in accordance with **ASME Section VIII Division 1 + Mandatory appendix-44 (cold stretch) with 'U' stamp**.

Moreover, the support legs used in the Céline 3 range are calculated **to resist high winds and earthquakes according to IBC code Zone 0 to Zone 4**.

- **A maximum use of Stainless steel** - Only WorldTank uses as much stainless steel in its construction to guarantee the lowest life cycle costs - valves, interconnecting piping, PR coil and all welded connections are stainless steel.
- **Components selected for their operational reliability** - mono-bloc pressure building economizer - regulator, safety system with dual relief valves and burst discs as standard, stainless steel valves.
- **Reduced overall operational costs** - optimized pipework layout with fewer connections minimize potential leaks and facilitate operation & servicing, filling assembly isolation valves as standard, proven painting techniques guarantee years of care-free operation.



VERTICAL CRYOGENIC STORAGE TANK - CO₂

USA STOCK



Type	RCIA6 (6 Ton)		RCIA14 (14 Ton)		RCIA27 (30 Ton)	
	Gross capacity (liters / USG) *	6 150	1 625	12 570	3 321	28 040
Net capacity (liters / USG) *	5 658	1 495	11 564	3 055	25 797	6 815
Empty weight (kg / lbs)	4 450	9 811	6 800	14 991	11 900	26 235
Weight full Carbon dioxide (kg / lbs) - CO ₂	10 408	22 945	18 977	41 838	39 064	86 122
Daily evaporation rate CO ₂ (%)	0,086		0,075		0,060	
∅ Diameter (mm / feet)	2 200 / 7.2					
HT height (mm / feet)	4 200	13.8	6 800	22.3	11 740	38.5
H (mm / feet)	520 / 1.7					
G (mm / feet)	1 055 / 3.5				980 / 3.2	
A (mm / feet)	2 250 / 7.4				2 300 / 7.5	
B (mm / feet)	2 450 / 8				2 500 / 8.2	
C (mm / feet)	1 245 / 4.1					

Type	RCIA50 (50 Ton)	
Gross capacity (liters / USG) *	47 530	12 556
Net capacity (liters / USG) *	43 728	11 552
Empty weight (kg / lbs)	20 040	44 181
Weight full Carbon dioxide (kg / lbs) - CO ₂	66 086	145 694
Daily evaporation rate CO ₂ (%)	0.045	
∅ Diameter (mm / feet)	2 840	9.3
HT height (mm / feet)	11 545	37.9
H (mm / feet)	650	650
G (mm / feet)	1 100	3.6
A (mm / feet)	3 000	9.8
B (mm / feet)	3 350	11
C (mm / feet)	1 530	5

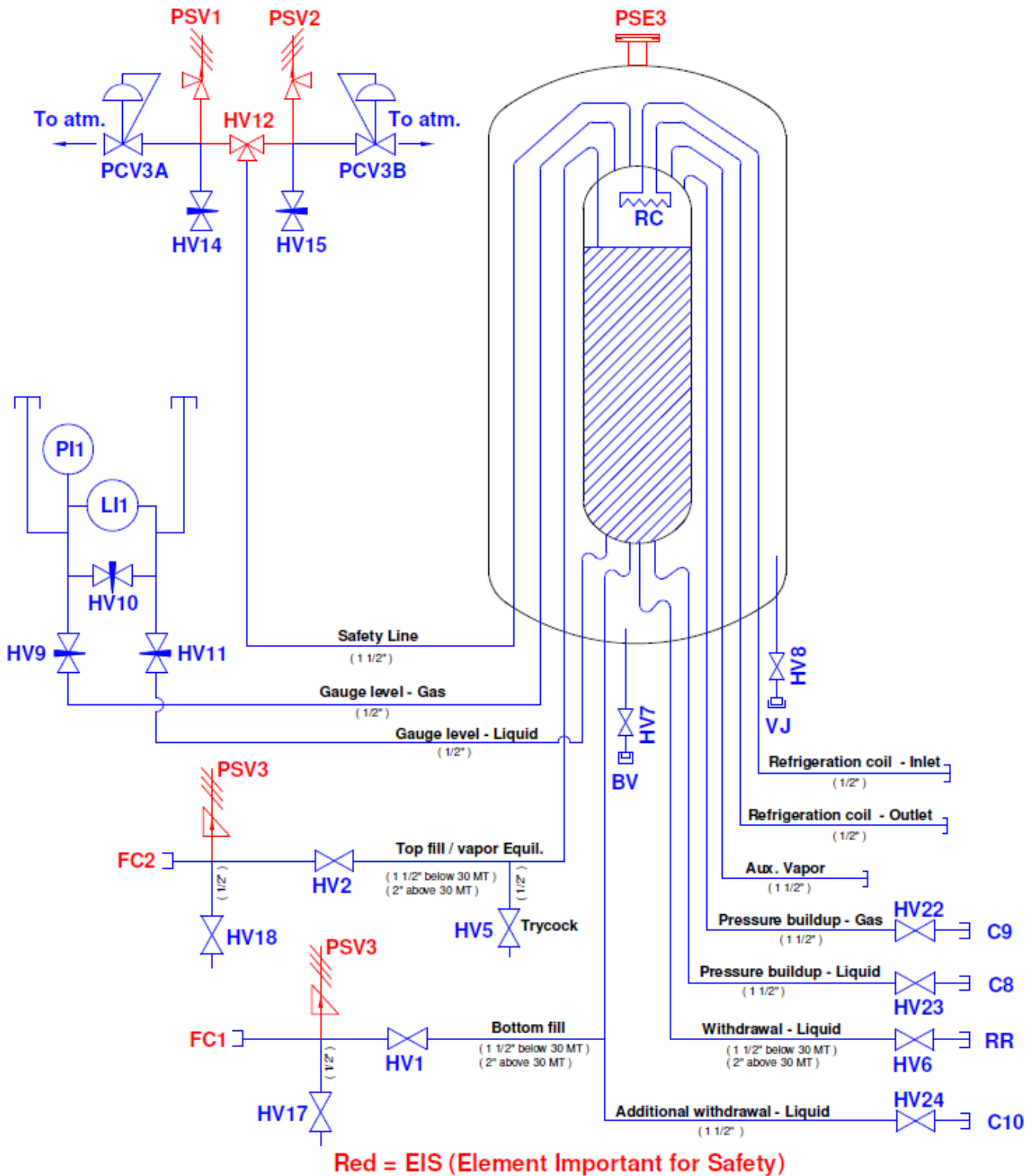
* Manufacturing tolerance : ± 4%

** The empty weight of the tank is approximate.

VERTICAL CRYOGENIC STORAGE TANK - CO₂

USA STOCK

FLOW DIAGRAM



VERTICAL CRYOGENIC STORAGE TANK - CO₂

USA STOCK



REFERENCE	DESCRIPTION	SIZE		VALVE	
		Below 30 MT	Above 30 MT	MANUFACTURER	MODEL NUMBER
BV	Vacuum pump down connection	-	-	-	-
C8, C9	Connections for pressure buildup unit	1 1/2"		-	FNPT threaded with Male plug
C10	Add. Liquid withdrawal connection	-	1 1/2"	-	FNPT threaded with Male plug
FC1 & FC2	Bottom & top filling coupling	1 1/2"	2"	-	SS Mueller flange with groove
HV1	Filling liquid	1 1/2"	2"	Jamesbury	C44-6-6-P-M-BW1-V36-V60
HV2	Filling gas	1 1/2"	2"	Jamesbury	C44-6-6-P-M-BW1-V36-V60
HV5	Full trycock	1/2"		Jamesbury	CN44-6-6-P-M-BW1-V36-V60
HV6	Liquid use	1 1/2"	2"	Jamesbury	C44-6-6-P-M-BW1-V36-V60
HV7	Vacuum isolation valve	1 1/2"		ITT	1.5" - 2401-T-903-Vacuum
HV8	Vacuum probe isolation valve	1/8"		Hoke	4551-F2B-1/8"
HV9	Level gauge manifold, Gas	OD 1/4"		Parker	4A-V4LR-SS-C3
HV10	Level gauge manifold, Equalizer	OD 1/4"		Parker	4A-V4LR-SS-C3
HV11	Level gauge manifold, Liquid	OD 1/4"		Parker	4A-V4LR-SS-C3
HV12	3 way diverter	3/4"	1 1/4"	Herose	Type 06510
HV14 & HV15	Vent valve for safety tree	1/4"		Generant	FNV-4MFB-X
HV17	Purge valve	1/2"		Jamesbury	CN44-6-6-P-M-BW1-V36-V60
HV18	Purge valve	1/2"		Jamesbury	CN44-6-6-P-M-BW1-V36-V60
HV22	Pressure building - Gas	1 1/2"		Jamesbury	CN44-6-6-P-M-BW1-V36-V60
HV23	Pressure building - Liquid	1 1/2"		Jamesbury	C44-6-6-P-M-BW1-V36-V60
HV24	Additional Liquid withdrawal	-	1 1/2"	Jamesbury	C44-6-6-P-M-BW1-V36-V60
LI1	Mechanical liquid level gauge	-		Midwest	MODEL - 116
PI1	Mechanical pressure gauge	-		Wika	232.54
PSE3	Annular space pressure relief	-		Cryolor	-

VERTICAL CRYOGENIC STORAGE TANK - CO₂

USA STOCK



REFERENCE	DESCRIPTION	SIZE		VALVE	
		Below 30 MT	Above 30 MT	MANUFACTURER	MODEL NUMBER
PSV1 & PSV2	Vessel safety relief valve	1/2"	1"	Herose	Type 06388
PSV3	Thermal relief valve	1/4"		Generant	CRV-250B-K-XXXX
PCV3A, B	Back pressure regulator	1/4"		Generant	BPR-250I-D-O2
RC	Refrigeration coil	1/2"		Cryolor	-
RR	Liquid use connection	1 1/2"	2"	-	FNPT threaded with Male plug
VJ	Vacuum gauge / sensor	1/8"		Teledyne Hastings	DV-6-R