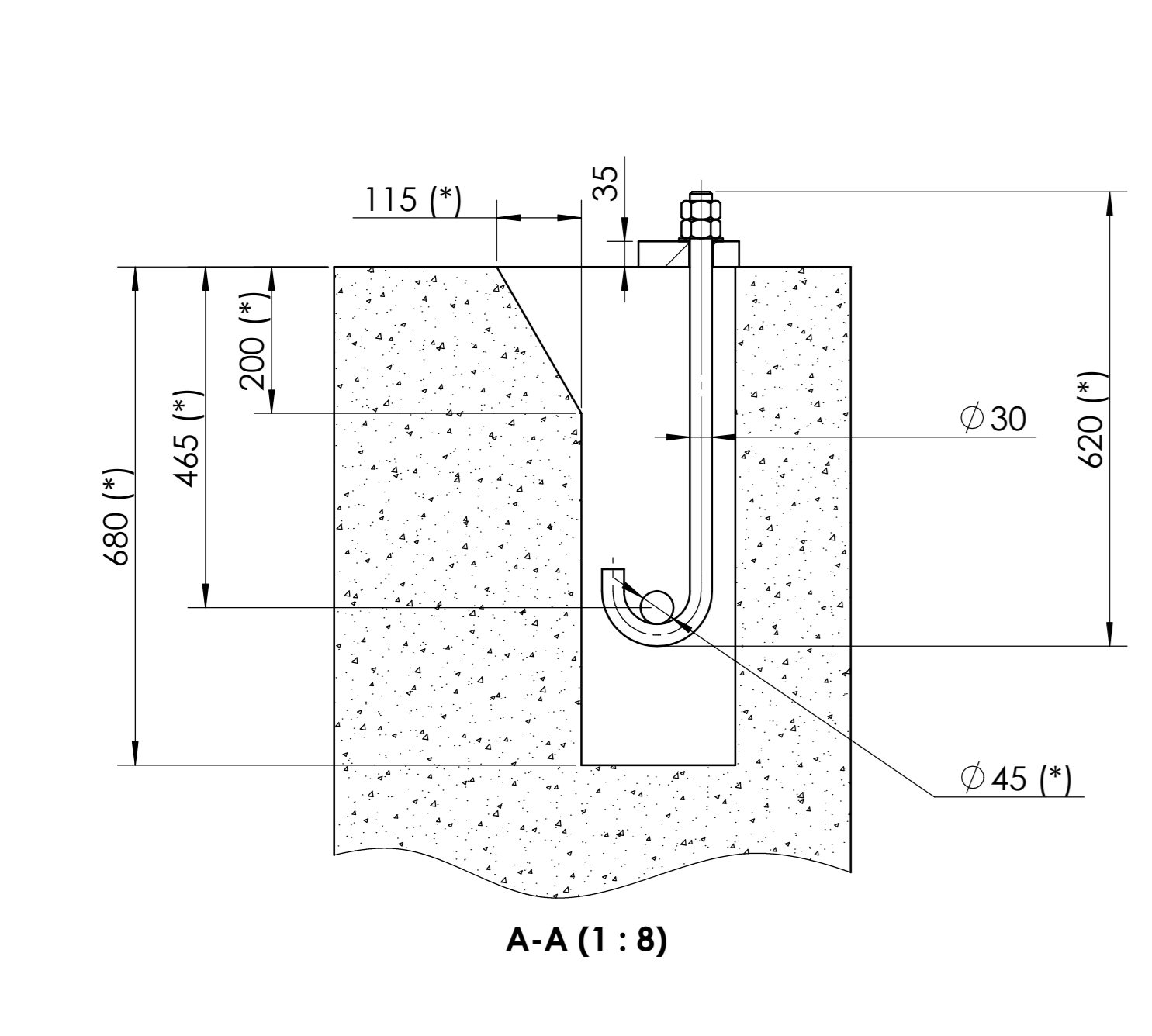


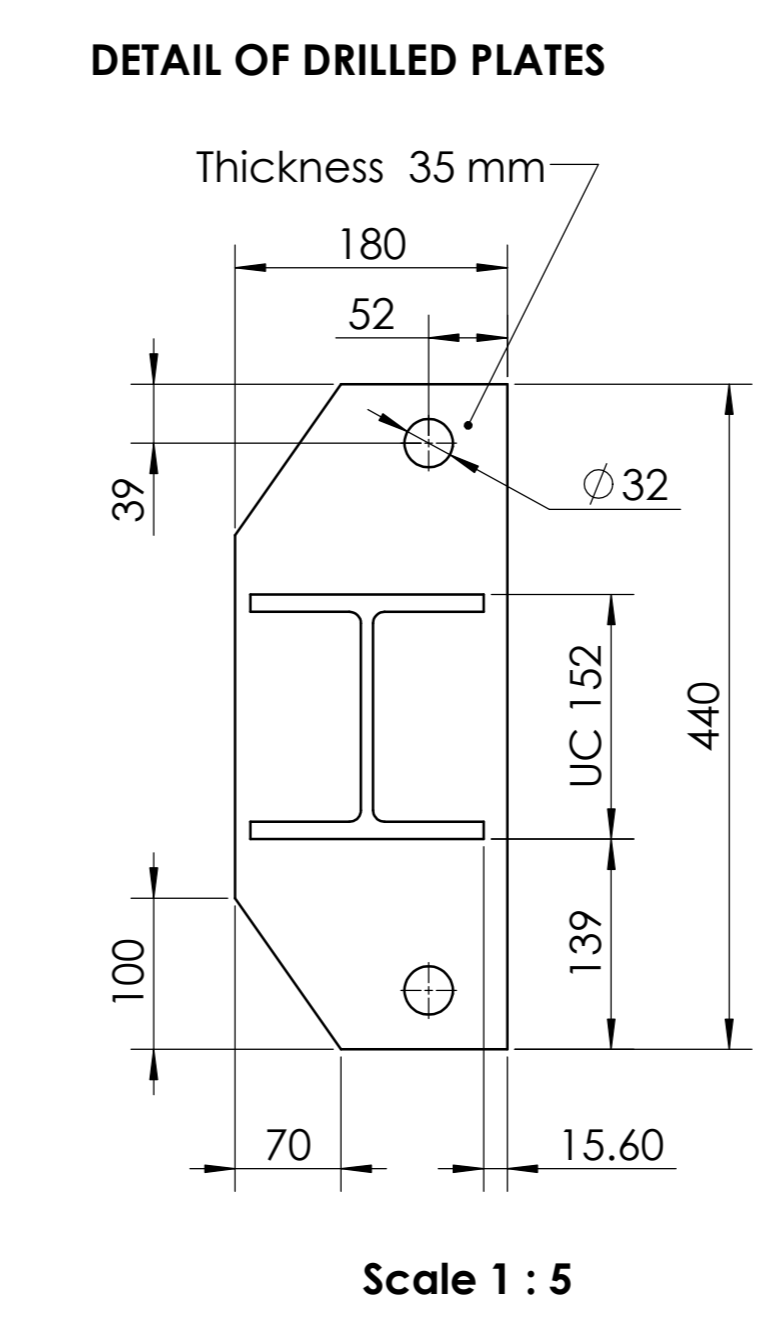
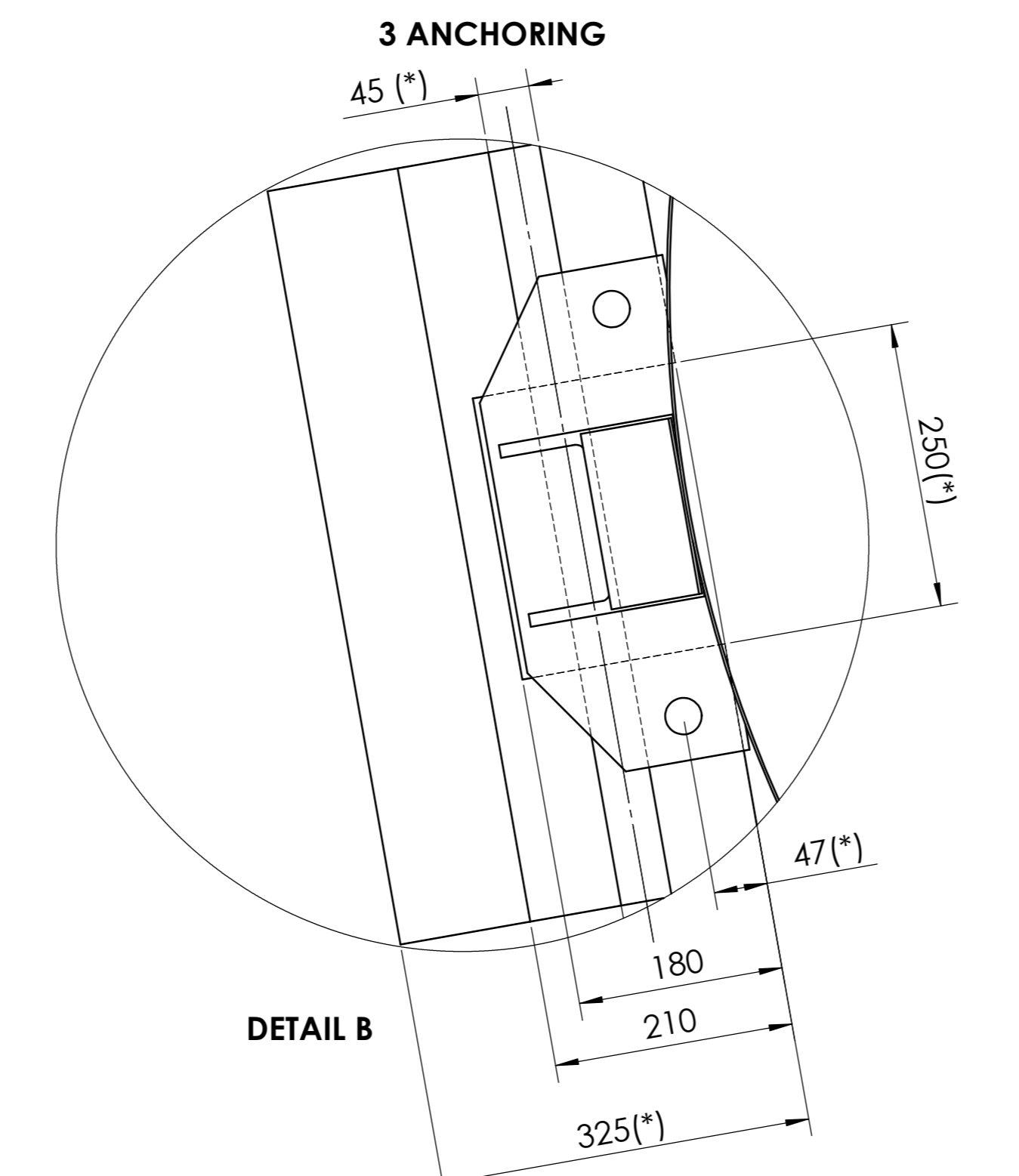
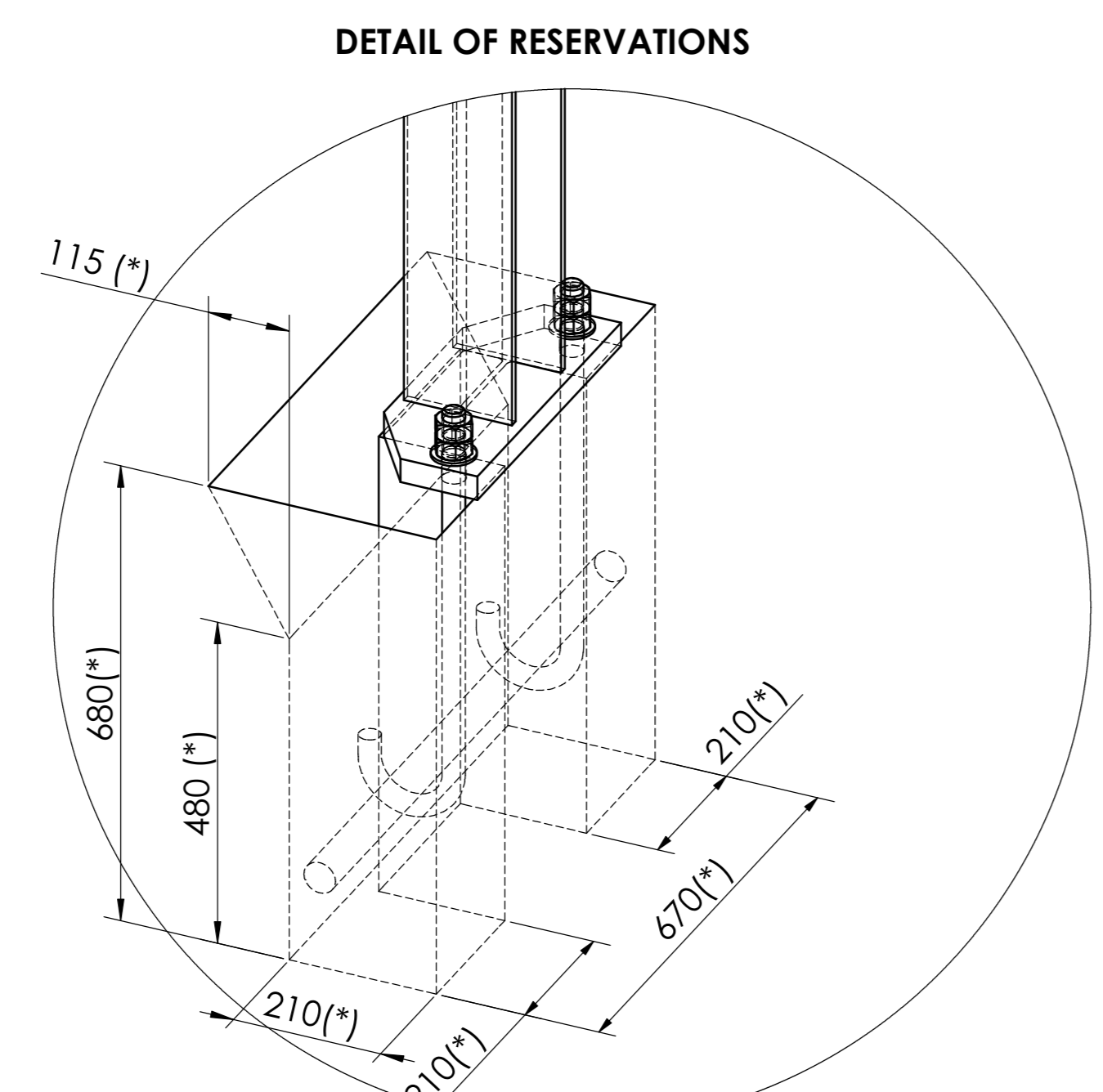
**THE ANCHORING METHOD**

(\*) For reference only. The exact dimensions of the civil works and the anchoring method(s) used must be approved by the competent authorities in the country of installation.



CUSTOMER SUPPLY

**NOTE:** The anchor rods shall not be sealed before positioning of the tank.



REV	DATE	BY	REVISION	APPROVED BY
A	23.01.2018	V.ARAYIND	Wind and seismic calculation updated	P.SIVA
			MODIFICATIONS	R.KAMARANALURTHY

SAUF INDICATIONS CONTRAIRES / UNLESS OTHERWISE STATED:	Dimensiones en mm / Dimensions in mm:
Application des tolérances de fabrication standard ISO 2768 - M1	Tolérances de coupe: R0.3
Manufacturing tolerances according to ISO 2768 - M1	Tolerances de coupe: R0.3
General tolerances of positioning: ISO 2768 - M1	Dimensional tolerances and chamfers according to ISO 2768 - M1

GA/Implantation/Layout - CA11_CTR	Scale: 1:15	Format: A0	Page: 1 sur 2
-----------------------------------	-------------	------------	---------------

Drawn By: V.ARAYIND



CALCULATION DATA				CA 11-17bar		Vessel datas		EMPTY	Nitrogen	Oxygen	Argon
				Données du réservoir		VIDE	Azote	Oxygene	Argon		
CALCULATION DATA	Ambient gas phase Phase gazeuse à l'ambient		5%	Working capacity Volume utile		L	10,020				
	Quality of the anchoring bolt Qualité de la tige d'ancrage			8.8	Mass of the vessel Masse du récipient		kg	5,800	13,890	17,220	19,740
					Height of the center of gravity Hauteur du centre de gravité		mm	2,912	2,952	2,958	2,961
Earthquake calculation Calculs au séisme				Calculation results Résultats des calculs		EMPTY	Nitrogen	Oxygen	Argon		
C0003389_A				VIDE		Azote	Oxygene	Argon			
UBC	Zone		4		Compression force per foot Effort de compression par pied		daN	9,205	22,315	27,703	31,785
	Soil profile Profil du sol		Stiff soil profile Sol Rigide		Traction force per foot Effort de traction par pied		daN	5,329	13,020	16,181	18,575
	Seismic source type Type de source de séisme		Not applicable		Shearing force per foot Effort de cisaillement par pied		daN	1,420	3,406	4,222	4,841
	Closest distance to known seismic source Plus petite distance à la source sismique connue		Not applicable								
Wind calculation Calculs au vent				Calculation results Résultats des calculs		EMPTY	Nitrogen	Oxygen	Argon		
0				VIDE		Azote	Oxygene	Argon			
UBC	Basic wind speed Vitesse de base du vent		210 km/h		Compression force per foot Effort de compression par pied		daN	6,350	9,121	10,243	11,091
					Traction force per foot Effort de traction par pied		daN	2,474	0	0	0
					Shearing force per foot Effort de cisaillement par pied		daN	862	862	862	862

0	23.01.2018	V.ARAVIND	Wind and seismic calculation updated	P.SIVA	R.K.MAHAAMURTHY
REV	DATE	Drawn By	MODIFICATIONS	Reviwed By	Approved By

SAUF INDICATIONS CONTRAIRES / UNLESS OTHERWISE STATED :  
Dimensions en mm / Dimensions in mm

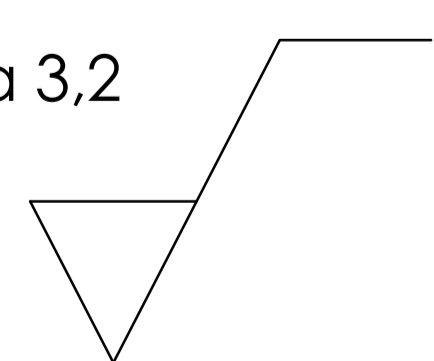
Tolérances de fabrication internes suivant NH63029

Manufacturing tolerances following NH63029

Tolérances générales des pièces usinées: ISO 2768 - mK

General tolerances of machined parts: ISO 2768 - mK

Ra 3,2

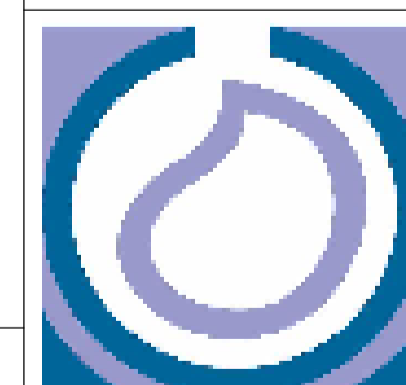


Tolérances dimensionnelles et angulaires des pièces de tôlerie, chaudronnerie ± 0.5mm par mètre 2° à 3°

Dimensional tolerances and angular parts sheet metal, boiler ± 0.5mm per meter 2° à 3°

Ce document est la propriété de CRYOLOR ASIA PACIFIC PVT LTD. Il est remis a titre strictement confidentiel. Il ne peut être reproduit ni communiqué sans autorisation expresse.

This document is the property of CRYOLOR ASIA PACIFIC PVT LTD. It is delivered as strictly confidential. It can not be reproduced or communicated without permission.



**CRYOLOR**  
ASIA PACIFIC

100 KM Mile stone NH 45, Kadamalaiputhur Post, Perumperkandigai Village, Madurantakam Taluk, Kancheepuram dist - 603 310. Ph: +91 44 3757 8068.

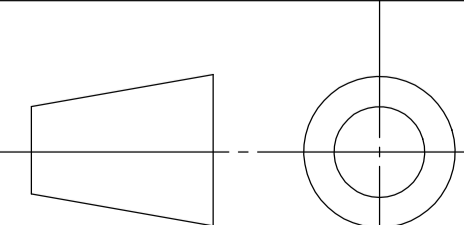
**GA/Implantation/Layout -CA11-3,000 Gallon 250 Psig MAWP**

HC002768

-

N° FAO:

Page 2 sur 2



Scale

**1:15**

Format

**A4**

N° de Projet / Project number

N° de plan / Drawing number

**HC002605 Rev.A**